

Welcome to
Support
Unit

2019



ORAN PARK
PUBLIC SCHOOL

Welcome

Welcome to Oran Park Public School.
We are very excited to start the new year.



Support Unit Staff

Honda	Miss Minihan & Mrs Griffiths
Bentley	Mrs Karadinovski & Mrs Nelmes
Aston Martin	Miss Young, Mrs Elks (Wed) & Mrs Pascoe
Subaru	Mrs Walsh, Mrs Elks (Fri) & Mrs Crabtree
Jaguar	Mrs Selcraig & Mrs Jerik
Saturn	Mrs Beard & Mrs Jones

Assistant Principals: Mrs Brightwell (Mon/Tues/Fri)/ Ms Bons (Wed/Thurs)

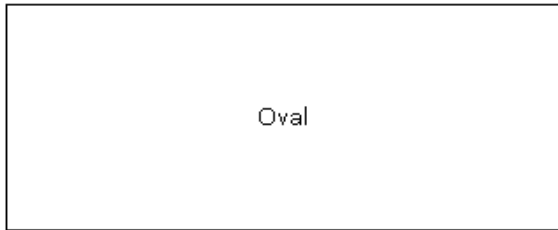
RFF: Ms Bons **STEM-** Miss Young

Counsellor: Miss Yell (Monday/Wednesday/Thursday/Friday)

School Psychologist: Ms Patel (Wed/Thurs Odd weeks)

School Map

Oran Park Public School Map 2019



Oval

Dem 24 Hyundai Zivanovic	Dem 17 Fiat Clay	Dem 16 Datsun Barrs	Dem 15 Opel Woodward	Dem 14 Rolls Ribero	Dem 13 Saab Bywater	Dem 22 Ford Richardson	
Dem 27 Buick Szaitz	Dem 25 Corvette Healy	Dem 18 Studebake Connor	Dem 12 Lexus Hulme	Dem 11 Toyota Andrews	Dem 10 Holden Kappler	Dem 9 Skyline Iles	Dem 21 Suzuki Holmes
Dem 28 Mustang Kinniburgh	Dem 26 Daewoo Filo	Dem 19 Tesla Sullivan	Dem 8 Maserati Selakovic	Dem 7 BMW Pfeiffer	Dem 6 Lambo Buccilli	Dem 5 Cadillac Velardi	Dem Toilets
Dem 30 Triton Vaughn	Dem 29 Renault Moon	Dem 20 Proton Sessions	Dem 4 Mazda Gibney	Dem 3 Dodge Colyer	Dem 2 McLaren Lacey	Dem 1 VW Fahy	Dem 23 Nissan Hart

ER0002
Hummer
Kinsella

ER0005
Mercedes
Dorman

FR0002
Porsche
James

FR0005
Bentley
Karadinovsk

GR0002
Mini
Lanham

GR0005
Skoda
Bradley

GR1002
Infiniti
Alavandi

GR1005
Bugatti
Trebble

JR0002
Subaru
Hayek

JR0001
Aston
Martin
Young

IR0002
Lotus
Cooper

IR0002
Kia
Kissane

KR0001
Jaguar
Selraig

KR0002
Alfa Romeo
Salter

Hall
CR0004

Handball
Concrete area

Library &
Comp Lab
Block B
Ground Level

BR1003
Audi
Boyd

BR1005
Land Rover
Skinner

BR1014
Jeep
Hallinan

BR1017
Honda
Minihan

Small
Playground

GA

Canteen
CR0027

Administration
Block A
Ground Level

Ball Court

Car Park

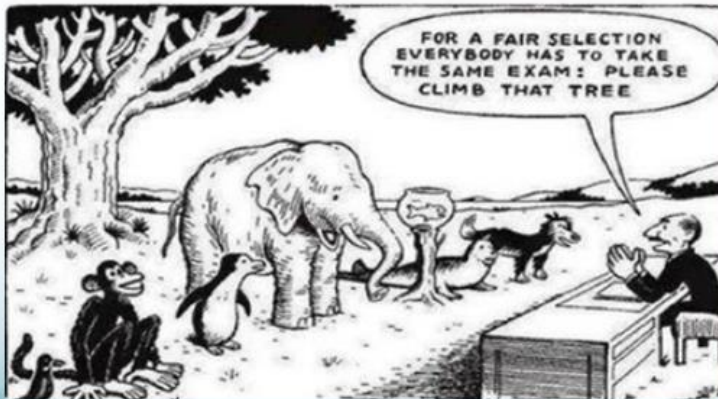
Dem 31 Isuzu Carr	Dem 33 Saleen McLaren	Dem 35 Shelby Tomcsyk	Dem 39 Geely Varacalli	Dem 41 Bedford Hill
Dem 32 Monaro MacDiarmid	Dem 34 Pontiac Allard	Dem 36 Citroen Dodds	Dem 40 Saturn Beard	Dem 42 Chevrolet Caronna
		Dem 37 Genesis Gulliford		
		Dem 38 MG Savvas		

Block H
Counsellor & DSTA

- Kinder
- Year 1
- Year 2
- Year 3
- Year 4
- Year 5
- Year 6
- Support

Adjustments to teaching and learning

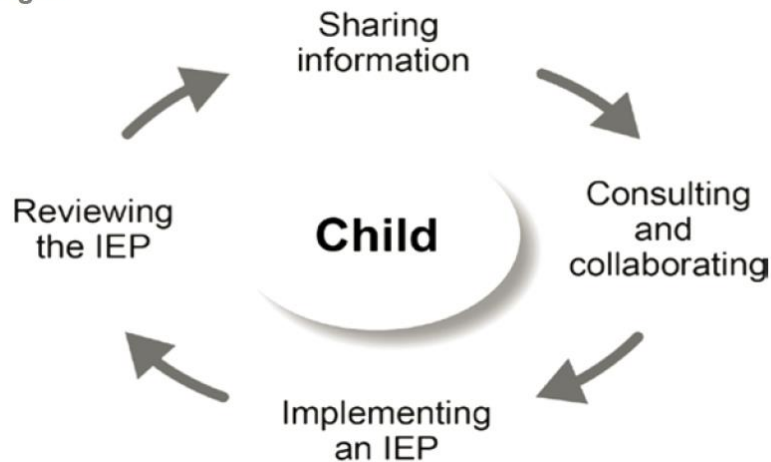
- ▶ Personalised approach to teaching and learning that delivers rigorous, meaningful and dignified learning programs.
- ▶ Students, parents/carers and schools work together to develop tailored, personalised programs to help students get the most out of their school life.
- ▶ Adjustments enable students with a disability and additional learning and support needs access syllabus outcomes and content on the same basis as their peers.



Individual Education Plans

- ▶ An IEP is required for students within the support unit to document adjustments and strategies that enable them to participate in learning on the same basis as their peers.
- ▶ Consultation and collaboration - of teachers with parents, support staff and other professionals where required.

IEP: Four key stages



Review Meeting Schedule

- ▶ End of Term 1- Year 6 students
- ▶ End of Term 2- K-6 students
- ▶ End of Term 4- K-5 students



- ▶ Review Meetings held twice a year. Meet to discuss your child's IEP goals.
- ▶ Continually revised as your child makes progress and faces new challenges, and as new instruction techniques and technology become available.

Integration

- ▶ Opportunities to participate in school activities on the same basis as students in regular classes.
- ▶ Flexibility for students to undertake some of their learning in other regular classes within the school.
- ▶ Integration opportunities are varied for every support student and dependent on their individual needs.
- ▶ Support and mainstream teachers liaise to arrange integration opportunities.



Sport

Jaguar: Tuesday

Subaru: Tuesday

Aston Martin: Friday

Saturn: Tuesday

Bentley: Friday

Honda: Friday



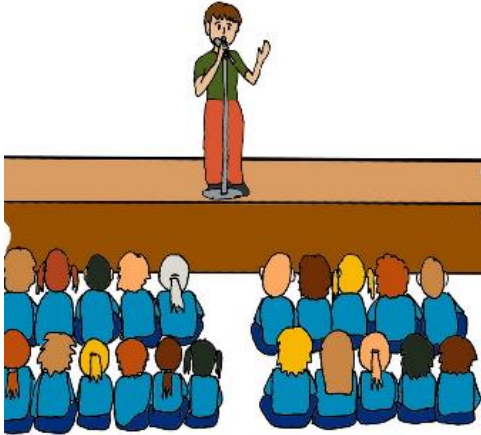
- Gymnastics program: Thursday
- Stage 2 & 3 - Gala Days- Term 2 & 3

Drop off and pick up procedures

- ▶ Support unit driveway is to be utilised as a kiss and drop area before and after school.
- ▶ Students can enter the small playground between 8:40-9:10am.
- ▶ Students are to be collected at either 2:45pm or 3:10pm.
- ▶ Late arrivals or early departure must report to the office to sign in and out students.
- ▶ If the kiss and drop area is full, please do the loop on South Circuit to allow time for the cars to leave.



Assembly



Held in the school hall on a fortnightly basis

Early Stage 1: Wednesdays	9:10am	(Odd weeks)
Year 1: Wednesdays	10:10am	(Odd weeks)
Year 2: Wednesdays	12:10pm	(Odd weeks)
Stage 2: Wednesdays	12:10pm	(Even weeks)
Stage 3: Wednesdays	10:10am	(Even weeks)

Assistant Principal awards will be handed out at the last assembly of the term.

Support Unit assemblies held throughout the year.



Scripture

- Tuesdays TBA

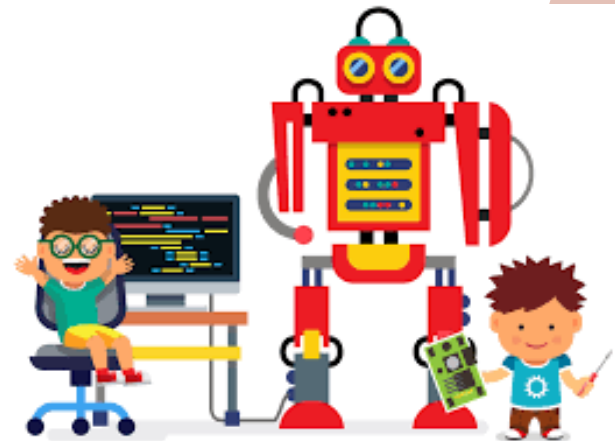
Library Borrowing

Monday-Thursday mornings 8:40am- 9:10am



Lunchtime activities

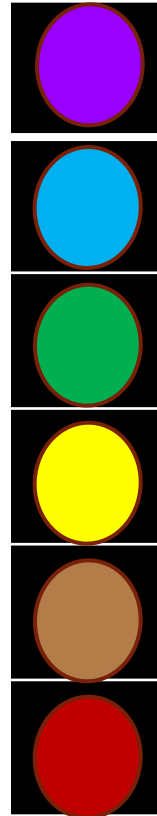
- Social skills programs
- Gross motor activities and equipment
- Gardening
- Technology club
- Mainstream clubs (Italian, Chess, Science, Koori)
- Mainstream playground



PBL

Organised
Proud
Productive
Safe

Traffic Light System



Super Student
Great Job
Ready to Learn
Warning
Time Out
Sent to another classroom

- ▶ Whole School PBL Lessons implemented
- ▶ OPPS tokens
- ▶ Classroom reward systems

Award System



White Award

x10



Assistant Principals Award

X 2



Sport Award

Medallion



Principals Award

X 2

- Awards are to be handed into the office.
- This reward system is ongoing.

Communication

- Teachers commence lessons from 9:10am. Discussions with teachers need to take place prior to 9:10am or after 3:10pm.
- Please see your child's teacher either before or after school commences or telephone/email the school to arrange a suitable time to meet.
- Newsletters are sent out during the term via the Oran Park Public School Skoolbag App which is also used to circulate important information.
- Individual communication books are used if required.



Support Services

- ▶ NDIS
- ▶ Therapists
- ▶ Assisted Travel
- ▶ Paediatricians
- ▶ Disability Services
- ▶ <http://www.camdenkids.com.au/>



A few reminders....



- Canteen money: Less is best
- Ensure food is brought in lunch boxes and containers.
- Fruit Break: Daily- Please pack fruit everyday
- Hats: No hat no play. All hats must be the school wide brim. No caps.
- **Do not** supply your children with eggs or nut based products such as peanut butter, Nutella, bars and biscuits with nuts or mixed nuts.
- No money is collected by teachers. Money to the office in an envelope clearly labelled with name, class, amount enclosed and activity.



Thank you for your attendance.

**WE LOOK FORWARD TO A
WONDERFUL YEAR AHEAD!**

Support Unit Teachers

